



WYNCHES FARM DRIVE

ST. ALBANS
AL4 0XH

Guide Price £825,000



All The Ingredients Needed For A Fabulous Lifestyle

A modern four bedroom detached family home within the catchment of the Ofsted outstanding Beaumont school enjoying a cul de sac location in this popular development. The generous ground floor accommodation consists of living room, dining room, conservatory, kitchen/breakfast area, study and cloakroom. On the first floor, the two main bedrooms have en suite shower room facilities with two addition bedrooms and family bathroom. Outside, there is a single garage with off road parking and a private rear garden backing onto woodland. Wynches Farm Drive is situated off Hatfield Road, close to good local amenities and excellent schools. St. Albans city centre with its extensive shopping and leisure facilities and the mainline railway station, linking St. Albans to London, St Pancras, remains only a short distance away.





Cassidy&Tate

Cassidy&Tate

Specialists in Bespoke Properties

- Four Bedroom Detached Home
- Popular Cul De Sac Development
- Two Ensuite Shower Rooms
- No Upper Chain
- Beaumont School Catchment
- Three Reception Rooms
- Private Garden
- Council Tax F £2,880

| Energy Efficiency Rating | | Current | Potential |
|---|-------------------------|---------|-----------|
| Very energy efficient - lower running costs | | | |
| (92 plus) A | | | |
| (81-91) B | | | |
| (69-80) C | | | |
| (55-68) D | | | |
| (39-54) E | | | |
| (21-38) F | | | |
| (1-20) G | | | |
| Not energy efficient - higher running costs | | | |
| | | 67 | 83 |
| England & Wales | EU Directive 2002/91/EC | | |

| Environmental Impact (CO ₂) Rating | | Current | Potential |
|---|-------------------------|---------|-----------|
| Very environmentally friendly - lower CO ₂ emissions | | | |
| (92 plus) A | | | |
| (81-91) B | | | |
| (69-80) C | | | |
| (55-68) D | | | |
| (39-54) E | | | |
| (21-38) F | | | |
| (1-20) G | | | |
| Not environmentally friendly - higher CO ₂ emissions | | | |
| | | | |
| England & Wales | EU Directive 2002/91/EC | | |



Cassidy&Tate



Cassidy&Tate

Perfect Fusion of Location And Way of Living

Why Cassidy & Tate

Cassidy & Tate are a fully independent estate agent who have developed unparalleled understanding on how people want to buy, sell and rent property within the residential property market in Hertfordshire and its surrounding areas. We are able to accommodate your individual requirements and deliver to you a more personalised service, tailored to your home buying, selling and letting needs.

We also have many years of experience in land and new homes and the pleasure of working alongside many reputable house builders and developers in Home Counties and Greater London. Whether you are looking to acquire or sell development opportunities and land, wish to purchase or sell a newly built or refurbished property, or require a site valuation and marketing advice we can help.

Your Local Property Experts

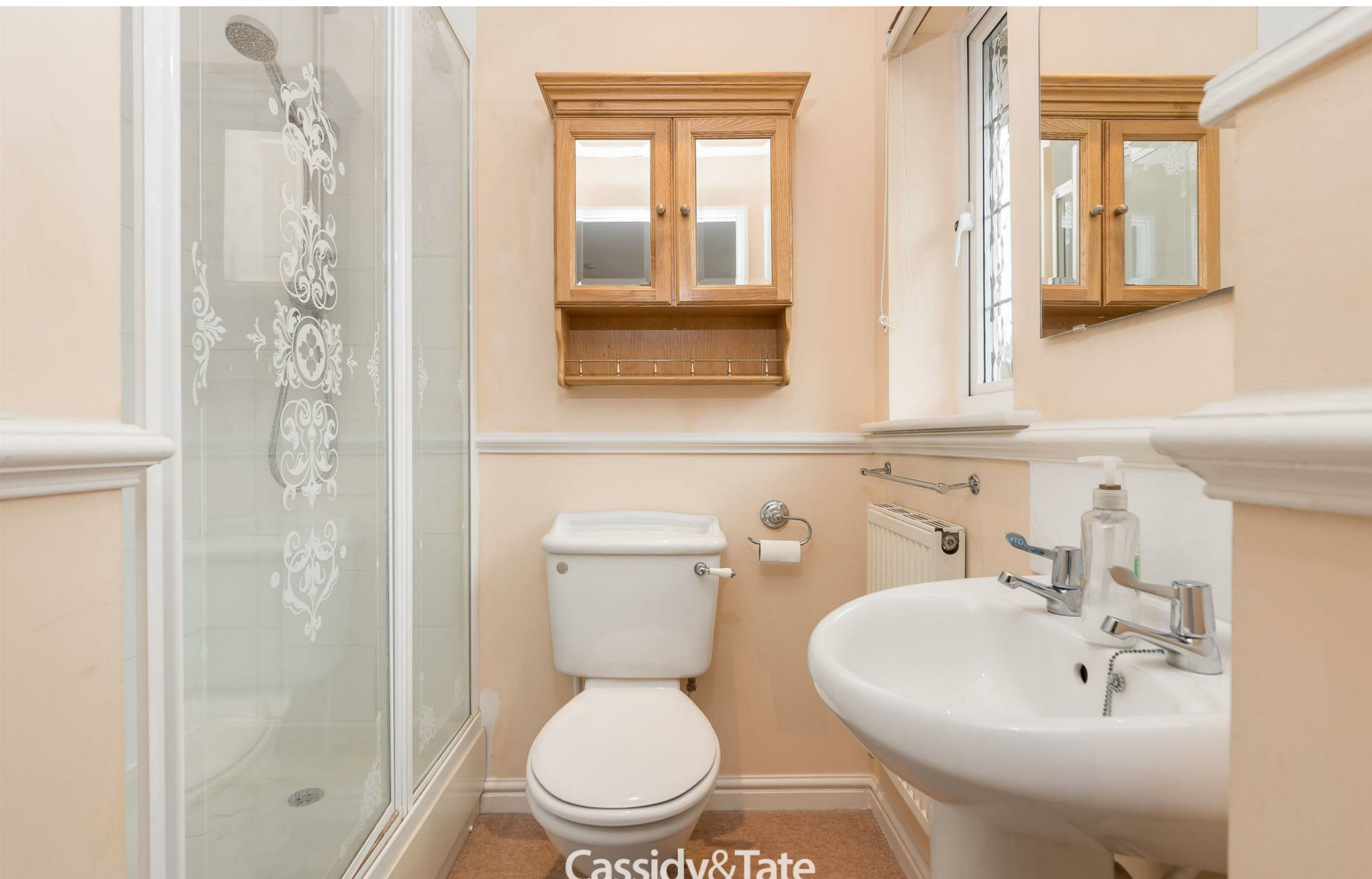
As one of St. Albans leading estate agents we work relentlessly to ensure our valued customers receive the exceptional service they deserve at all times. We epitomise not only professional estate agency knowledge, but a dedication to integrity and responsiveness to every client. The Cassidy & Tate team will be available to you when in need to help overcome any stressful situations that may arise. We are here to offer you valuable and honest advice when needed so that you can navigate the best path through the process. We know the marketplace, the buyers, the sellers and neighbourhoods, but most importantly we know how to put our clients' needs first. Our state of the art sales tools, modern technology and our own in-house fully independent Mortgage Broker is here to make your journey easier and more direct to your final goal. At Cassidy & Tate you will be in control of your sale or purchase and we will help you get the best result possible



Cassidy&Tate



Cassidy&Tate



Cassidy&Tate



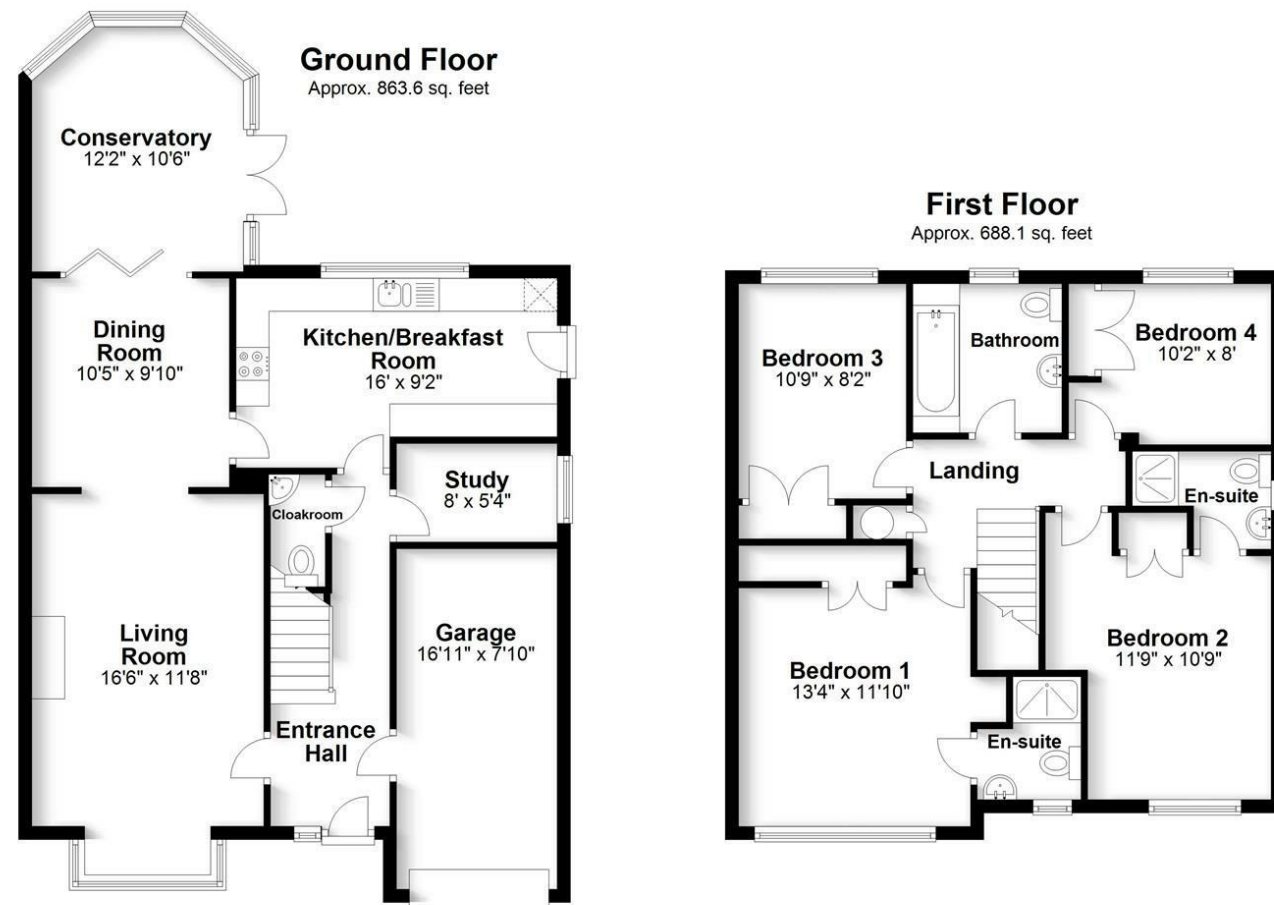
Cassidy&Tate

St Albans Office
 10 High Street, St Albans
 Herts AL3 4EL
 01727 228428
 stalbans@cassidyandtate.co.uk

Marshalswick Office
 59 The Quadrant, St Albans,
 Herts AL4 9RD
 01727 832383
 marshalswick@cassidyandtate.co.uk

Wheathampstead Office
 39 High Street, Wheathampstead,
 Herts AL4 8BB
 01582 831200
 wheathampstead@cassidyandtate.co.uk

Knightsbridge Office
 45 Pont Street, Knightsbridge
 London SW1X 0BD
 020 7629 9966
 26@theknightsbridgeoffice.co.uk



Total area: approx. 1551.7 sq. feet

Produced for Cassidy & Tate Estate Agents
 For guidance purposes only. Not to scale.

Plan produced using PlanUp.



Cassidy&Tate

Award Winning Agency